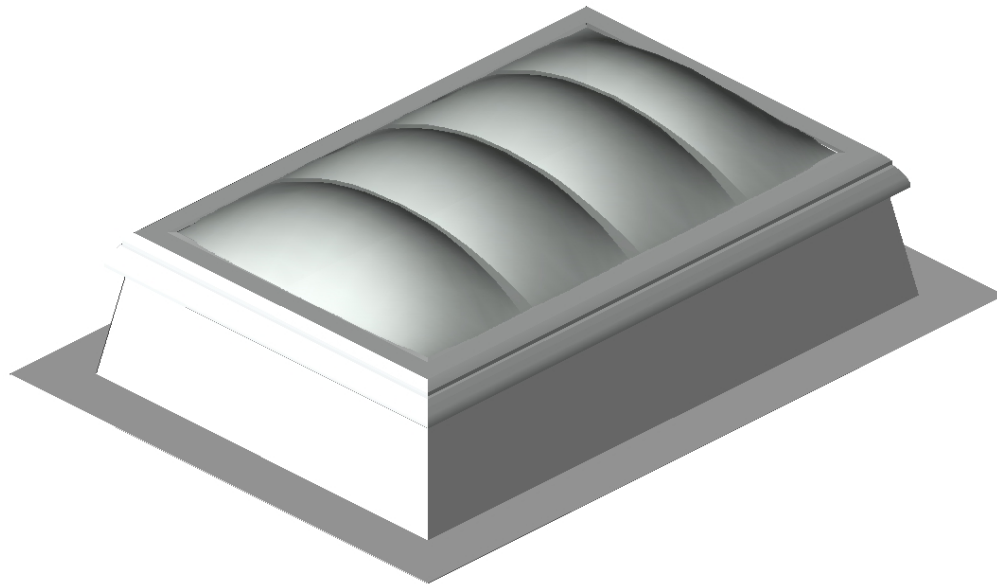


### 3D-View

Turnable and zoom can be activated in Adobe Acrobat Reader under Windows



### Edit configuration

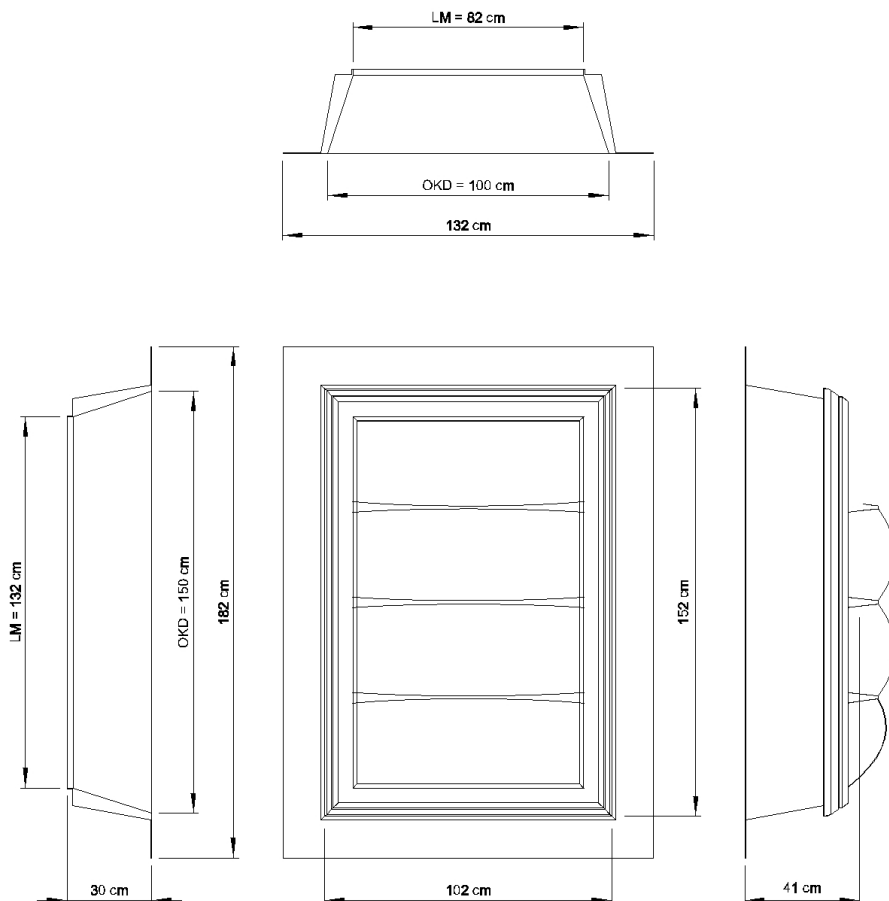
This configuration can be edited using the following link:

[Open in configurator](#)

**Product Features**

Attribute	Value
<b>ROOFLIGHT F100 W</b>	
product ID	LPC3 opal 100/150 K30 LR SS LOD500
level of detail	LOD 500
	lower LOD value = simplified selection and reduced geometry
<b>UPPER PART</b>	
order size, top roof edge size (OKD) [cm]	100 / 150
clear dimension (LM) [cm]	82 / 132
exit hatch	no exit hatch
glazing	
heat transition $U_t$ [W/m <sup>2</sup> K]	1.8 - 2.0
material	dome impact-resistant, high temperature resistant
transparency	opal
	triple glazing
<b>UPSTAND</b>	
type of upstand	GRP upstand
height [cm]	30
features	
better heat insulation upstand	no
suspension lip for storage of the roof line	no
PVC rail	no
heat insulated foot flange	no
<b>DRIVE</b>	
smoke lift	no
type of drive	without
<b>YOUR CONFIGURATION HAS THE FOLLOWING QUALITIES</b>	
OKD width	100 cm
OKD length	150 cm
LM width	82 cm
LM length	132 cm
height of upstand	30 cm
thermal transition $U_t$	ca. 2.0 W/(m <sup>2</sup> K)
noise insulation level $R_{w,p}$	ca. 21 dB
light transmission $\tau$	ca. 42 %
energy transmission $g$	ca. 42 %
product standard	EN 1873
fall-through protection	fall-through proof for one year from production ((according to GS BAU 18)
construction material class upstand	E (according to EN 13501-1)
construction material class glazing	E, d0 (nach EN 13501-1)
hail resistance class (glazing, tightness)	HW3 (according to VKF standard)
hail resistance class (glazing, light transmission)	HW3 (according to VKF standard)

## Dimensional Drawing



## Attachments

Double-click a paperclip icon to open a file, or right-click to save it.