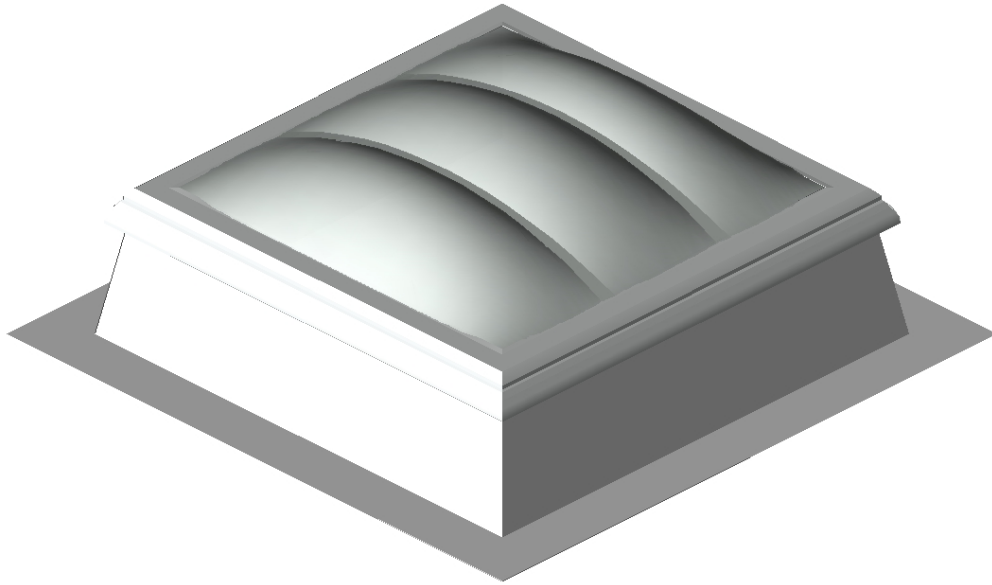


3D-View

Turnable and zoom can be activated in Adobe Acrobat Reader under Windows



Edit configuration

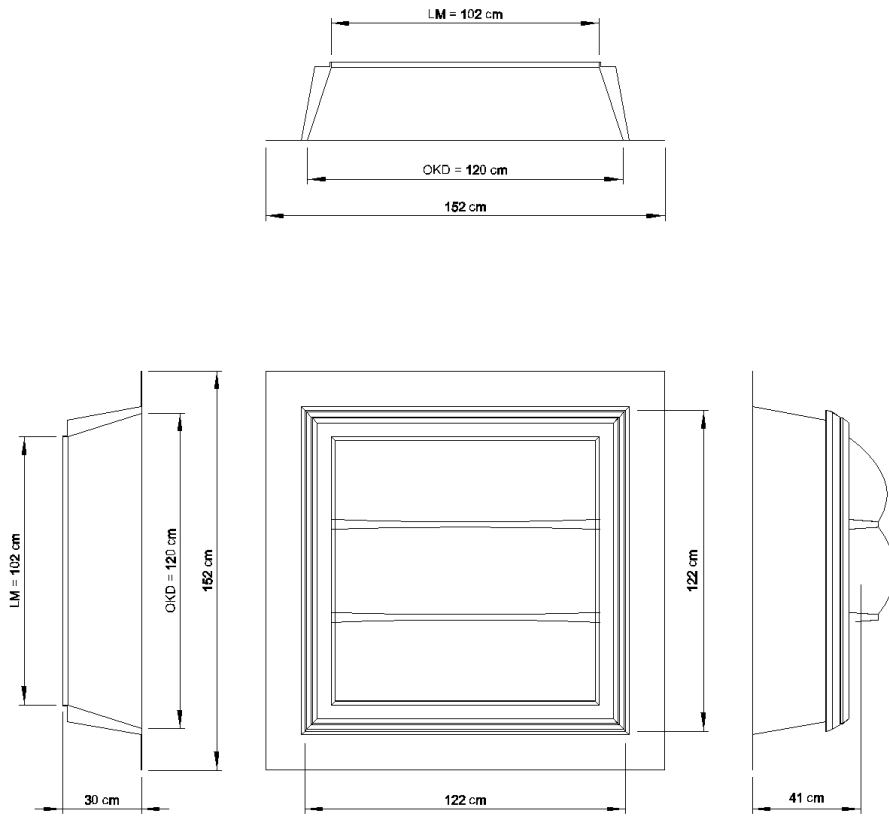
This configuration can be edited using the following link:

[Open in configurator](#)

Product Features

Attribute	Value
ROOFLIGHT F100 W	
product ID	LPC3 opal 120/120 K30 LR SS LOD500
level of detail	LOD 500
	lower LOD value = simplified selection and reduced geometry
UPPER PART	
order size, top roof edge size (OKD) [cm]	120 / 120
clear dimension (LM) [cm]	102 / 102
exit hatch	no exit hatch
glazing	
heat transition U_t [W/m ² K]	1.8 - 2.0
material	dome impact-resistant, high temperature resistant
transparency	opal
	triple glazing
UPSTAND	
type of upstand	GRP upstand
height [cm]	30
features	
better heat insulation upstand	no
suspension lip for storage of the roof line	no
PVC rail	no
heat insulated foot flange	no
DRIVE	
smoke lift	no
type of drive	without
YOUR CONFIGURATION HAS THE FOLLOWING QUALITIES	
OKD width	120 cm
OKD length	120 cm
LM width	102 cm
LM length	102 cm
height of upstand	30 cm
thermal transition U_t	ca. 2.0 W/(m ² K)
noise insulation level $R_{w,p}$	ca. 21 dB
light transmission τ	ca. 42 %
energy transmission g	ca. 42 %
product standard	EN 1873
fall-through protection	fall-through proof for one year from production ((according to GS BAU 18)
construction material class upstand	E (according to EN 13501-1)
construction material class glazing	E, d0 (nach EN 13501-1)
hail resistance class (glazing, tightness)	HW3 (according to VKF standard)
hail resistance class (glazing, light transmission)	HW3 (according to VKF standard)

Dimensional Drawing



Attachments

Double-click a paperclip icon to open a file, or right-click to save it.