



**ESTABLISHED  
IN 1909**

OVER 100 YEARS OF EXPERIENCE



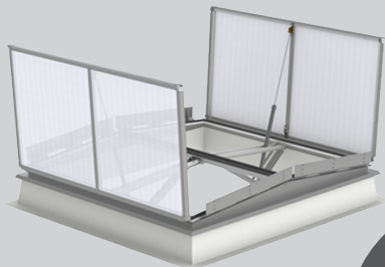
**PRODUCT  
STANDARDS**

ALL PRODUCTS TESTED TO HIGHEST STANDARDS AND CE MARKED



**EPD  
CERTIFICATION**

ALL PRODUCTS ARE EPD-CERTIFICATED



**DIGITAL  
BIM-OBJECTS**

BIM-OBJECTS FOR ALL ROOFLIGHTS



**WHO ARE WE?**



**INSURANCE  
COVER**

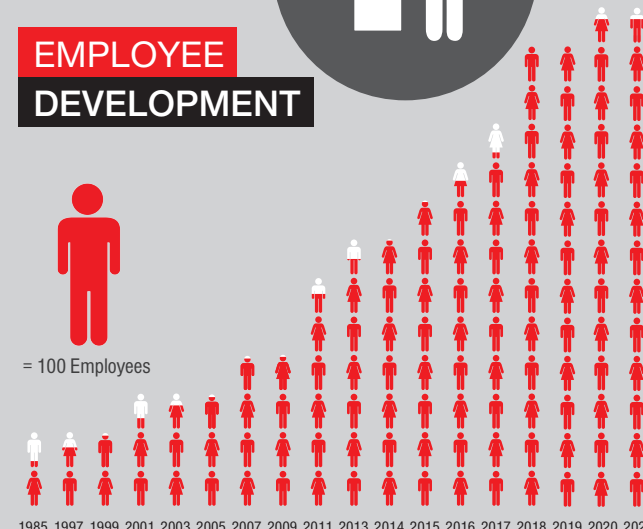
PUBLIC LIABILITY: £2,000,000  
PRODUCT LIABILITY: €20,000,000  
PROFESSIONAL INDEMNITY: £2,000,000  
EMPLOYERS LIABILITY: £10,000,000



**EMPLOYEE  
DEVELOPMENT**



= 100 Employees



**MEMBERS  
OF**



SAVING YOU VALUABLE TIME



**TURNOVER  
DEVELOPMENT**

