



ROOFLIGHTS & ROOF GLAZING

Project reference

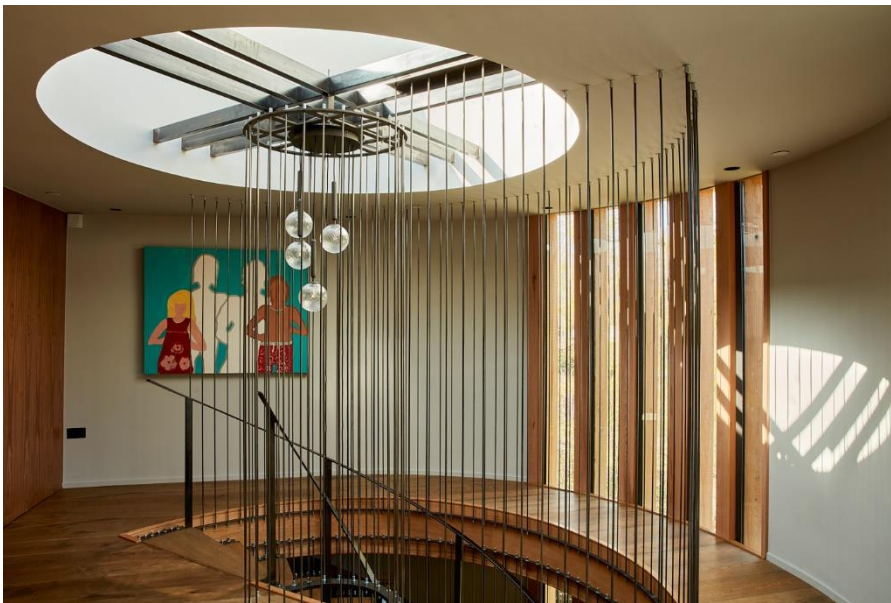
Private residential new build
South Manchester

Architect: Vasco Trigueiros
Featured on: Grand Designs



LAMILUX U.K. Limited supplied five Glass Skylight FE Circular rooflights to a residential new-build in the South Manchester suburb. As featured on Series 23 of Grand Designs, the programme showcasing modern architecture and design in homebuilding projects, this three-storey family home project focuses on beautiful lines and natural daylight.

Presented by Kevin McCloud, the BAFTA winning programme follows the build of the canteliver design boasting curved glass and cladding throughout the structure, which is complimented by the aesthetically appealing round design of the rooflights. With double glazed solar control glazing, the skylights serve the dual function of creating both light and energy whilst providing a comfortable glare free ambiance.



Three of the five skylights span an impressive 2500mm diameter to give plentiful natural daylight with a daylight size diameter of 2200mm. To achieve this non standard size, a special upstand was designed to support the rooflights.

The remaining two skylights, each measuring 1500mm, were integrated with electrical motors to enable natural ventilation to enter the bathroom and hall areas.





ROOFLIGHTS & ROOF GLAZING



The circular skylights were delivered to site pre assembled to the fully insulated 300mm high GRP up-stands making them the perfect connection for the flat roof. The upstand is a key component in the whole LAMILUX flat skylight system and makes installation quick and simple, saving builder costs and time of constructing difficult circular timber upstands on site. The airtight and watertight joint between the seamless upstand and the rooflight is made in our factory and ensures a guaranteed constant seal which removes interface problems which can lead to air or water leakage.

