



ROOFLIGHTS & ROOF GLAZING

Project reference

National Gallery Museum
Westminster, Central London

Architect: Purcell

Contractor: Willmott Dixon
Interiors



LAMILUX U.K. Limited have recently supplied and installed a continuous self-spanning 20° mono pitch atrium rooflight construction at the prestigious National Gallery Museum.

Measuring 8.6m long x 5m wide, the glass rooflight with vertical elements was designed to make use of the space where an open courtyard once stood. The area has now been roofed over, using the LAMILUX Glass Roof PR60 and opened up into a large atrium to make the space more usable. As the longstanding courtyard cut through several floors, there was a requirement for smoke ventilation which was incorporated into the roof glazing by integrating eight double smoke vents with tandem actuators. LAMILUX also supplied the various controls and rain sensors to provide the client with the complete package.



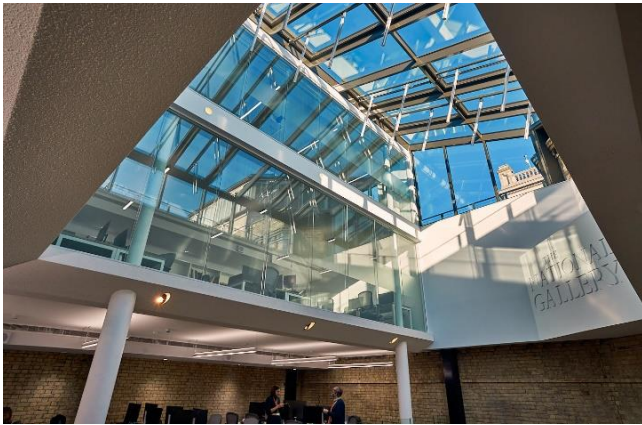
During planning stage, LAMILUX worked with the architect and main contractor to design a complete glass and frame solution tested and certified to achieve stringent airtightness, watertight and sound reduction values.

Throughout installation, care and consideration needed to be taken into account when trimming around the wall and ledge which was not flush.





ROOFLIGHTS & ROOF GLAZING



The National Gallery is an arts centre in Trafalgar Square in the City of Westminster, Central London and houses a collection of over 2,300 paintings dating from the mid 13th century to 1900. Although originally founded in 1824, the present building is the third to house the National Gallery, however only the facade onto Trafalgar Square remains essentially unchanged as the building has been expanded throughout its history.

