



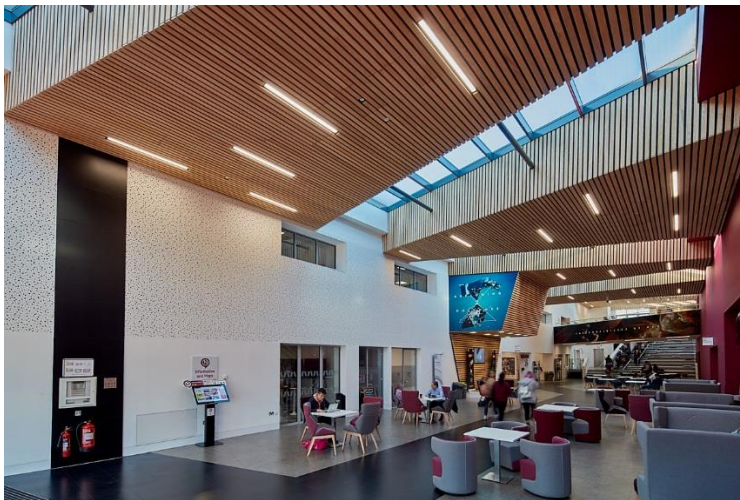
ROOFLIGHTS & ROOF GLAZING

Project reference

LAMILUX Glass Roof PR60
Sheffield Hallam University

Architect: Watson Batty Architects

Main Contractor: Geo Houlton & Sons



LAMILUX designed, supplied and installed seven uniquely shaped glass rooflights to create an aesthetic pleasing solution for the overlooked roof.

The high quality requirements of the STEM building at the university meant that high performance solar control glass was used.



Why LAMILUX were chosen

- Low Ug-value of 0.29 W/m²k was specified
- Each glass field within each rooflight was required to be a slightly different size and shape to create the unusual design

