



# ROOFLIGHTS & ROOF GLAZING

## Project reference

LAMILUX Glass Roof PR60  
Cartwright Gardens

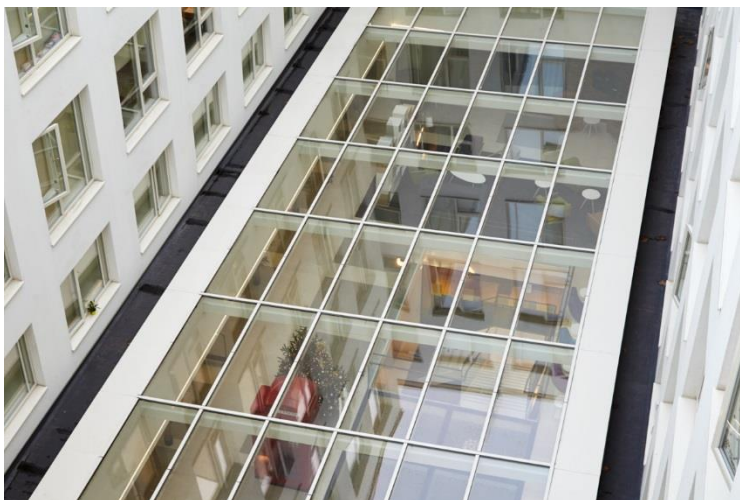
Architect: TP Bennett

Main Contractor: Brookfield Multiplex



LAMILUX designed and installed a shallow pitched glass roof for the central courtyard atrium of the student accommodation halls.

The 60 equal glass panels formed the 7m X 29m rooflight featuring a sound reduction index of 38dB with double layered heat protection glass.



## Why LAMILUX were chosen

- LAMILUX could install with a surface inclination of just 3°
- The architect wanted to achieve a class 2 fragility roof for safety of maintenance personnel whilst maintaining a low pitch

