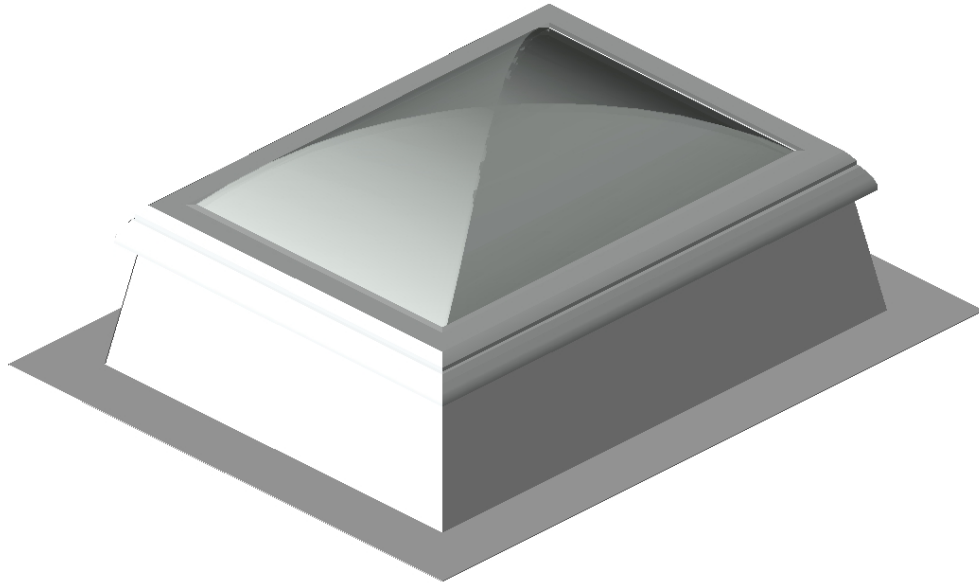


### 3D-View

Turnable and zoom can be activated in Adobe Acrobat Reader under Windows



### Edit configuration

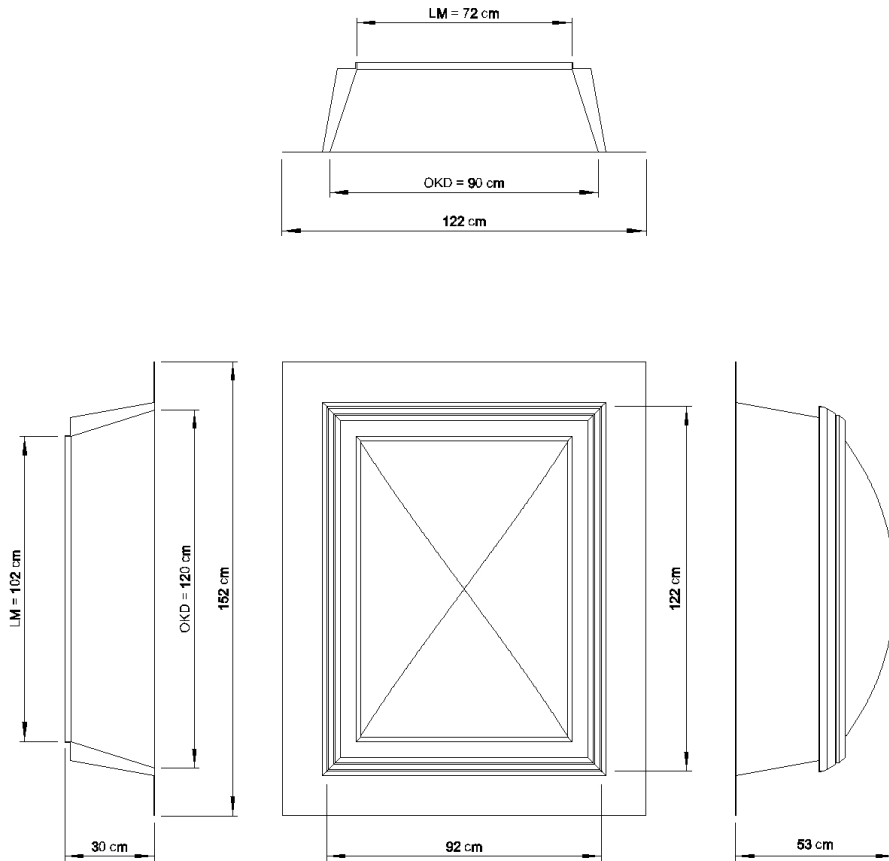
This configuration can be edited using the following link:

[Open in configurator](#)

## Product Features

Attribute	Value
<b>ROOFLIGHT F100</b>	
product ID	LA3 090/120 K30 LR SS LOD500
level of detail	LOD 500
	lower LOD value = simplified selection and reduced geometry
<b>UPPER PART</b>	
order size, top roof edge size (OKD) [cm]	90 / 120
clear dimension (LM) [cm]	72 / 102
exit hatch	no exit hatch
glazing	
heat transition $U_t$ [W/m <sup>2</sup> K]	1.8 - 2.0
material	dome plastics
transparency	opal
	triple glazing
<b>UPSTAND</b>	
type of upstand	GRP upstand
height [cm]	30
features	
better heat insulation upstand	no
suspension lip for storage of the roof line	no
PVC rail	no
heat insulated foot flange	no
<b>DRIVE</b>	
type of drive	without
<b>YOUR CONFIGURATION HAS THE FOLLOWING QUALITIES</b>	
OKD width	90 cm
OKD length	120 cm
LM width	72 cm
LM length	102 cm
height of upstand	30 cm
thermal transition $U_t$	ca. 1.8 W/(m <sup>2</sup> K)
noise insulation level $R_{w,p}$	ca. 21 dB
light transmission $\tau$	ca. 59 %
energy transmission $g$	ca. 59 %
product standard	EN 1873
fall-through protection	no fall-through protection
construction material class upstand	E (according to EN 13501-1)
construction material class glazing	E, d0 (nach EN 13501-1)
hail resistance class	HW5 (according to VKF standard)

## Dimensional Drawing



## Attachments

Double-click a paperclip icon to open a file, or right-click to save it.