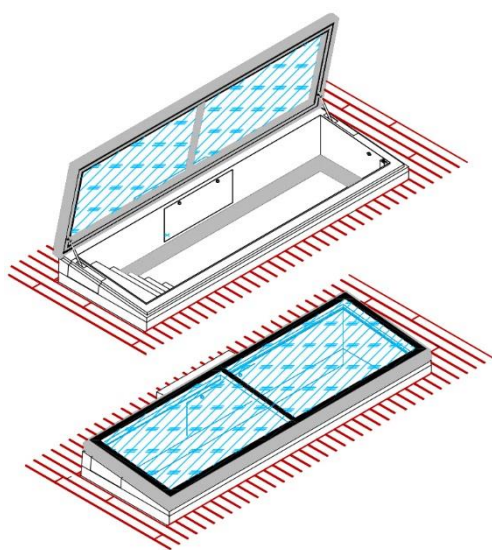
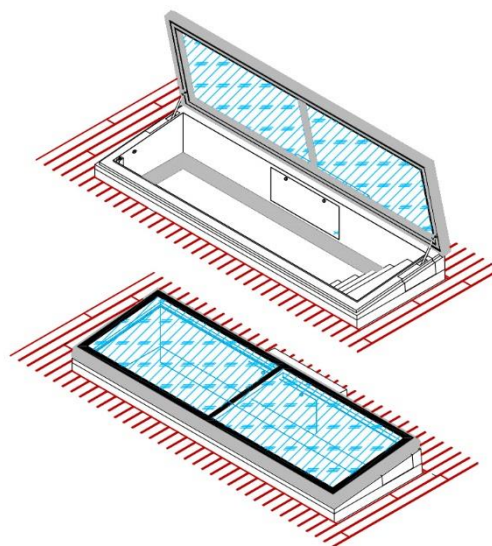


LAMILUX Flat Roof Exit Swing.

Technical data sheet.



Option 1: Left opening



Option 2: Right opening

The Flat Roof Exit Swing, is a space saving, swift opening exit hatch which opens by 84° in approx. 25 seconds. Available with a choice of 2 lengths - 3000mm or 3500mm, the 1000mm wide exit swing is suitable as a convenient and comfortable horizontally opening roof exit for stairs. The hydraulically opening Roof Exit benefits from enhanced isothermal characteristics in the overall construction – this results in no condensation whilst achieving maximum energy efficiency and thermal insulation alongside excellent air tightness values.

Technical info.

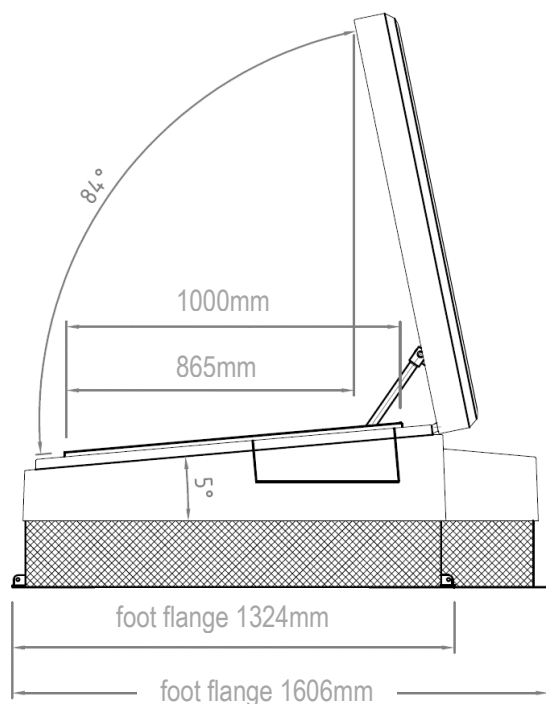
- Available in 2 structural roof opening sizes: 1000 x 3000mm (weight: 385 Kg) or 1000 x 3500mm (weight: 425 Kg)
- Available as left or right opening. The opening direction must be specified when ordering (Changes to the opening direction at site are not possible.) The stairs are not part of the exit and must be provided by the customer
- Triple glazing as standard, separated into two fields by a crossbar. Further glazing options are available (see page 2)
- Closing edge protection via sensor

Glazing options.

The LAMILUX Flat Roof Exit Swing offers triple glazing as standard. Further solar control glazing options are available. Please call us to discuss specific project specification requirements if they are not included in the below table.

Type	Glass outside (Toughened)	Spacer	Glass Centre	Spacer	Glass inside (Laminated)	Light Trans- mission	Total energy transmit- tance	Sound insulation value $R_{w,p}$	Ug- Value
Triple glazed – standard	6mm	16	4 Float	16	8mm - clear	72%	0.51	C. 39dB	0.6 (W/m ² k)
	6mm	16	4 Float	16	8mm - matt	49%	0.50		
Triple glazed – 60/30 solar control coating	6mm	16	4 Float	16	8mm - clear	55%	0.30		
	6mm	16	4 Float	16	8mm - matt	37%	0.27		

Section drawing / dimensions.



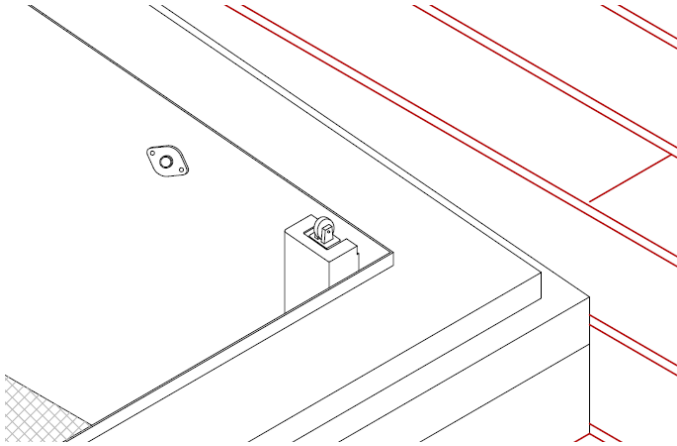
The thermally insulated upstand consists of a vertical steel base frame and has a 5° inclined geometry at the top (rainwater drainage from the two glass panes).

The height of the upstand is 41 cm at the eaves end and 50 cm at the opposite side.

The outside is made of GRP, the inside is covered with aluminium sheet.

Due to the maximum opening angle of 84°, the projected opening width is approx. 865 mm.

Limit switch and light barrier.



The comfort roof exit has a limit switch for opening monitoring on the opposite narrow side of the exit, as well as a light barrier for monitoring the exit area of the element.

To open the exit hatch, the hydraulic unit is controlled via a key switch with dead man's control.

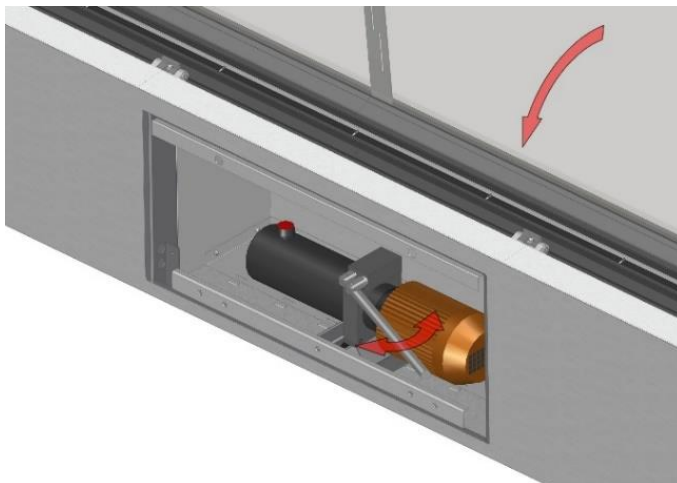
Functioning with 24V variant.

During standard operation, the power unit is supplied with a voltage of 24V by a power supply unit. The batteries are automatically charged if required.

In case of failure of the 230V line voltage, the power unit is automatically operated with the 24V voltage of the batteries. The capacity of the batteries is sufficient for approx. 20 openings of the exit hatch.

The failure of the line voltage (battery operation) is indicated by a warning light in the limit switch case.

Safety:



Operation may only be carried out by means of a key switch mounted in the visible area and provided by the customer.

The exit area is monitored by a light barrier. On the outside of the hinge a clamping protection is factory fitted.

An opening monitoring device is pre-assembled as a signalling contact for connection to a central control unit provided by the customer.

The complete hydraulic system is equipped with a leakage control and is partly accessible via internal inspection flaps.

Opening or closing in case of power failure is possible by manual operation by means of a hand lever located behind the cover:

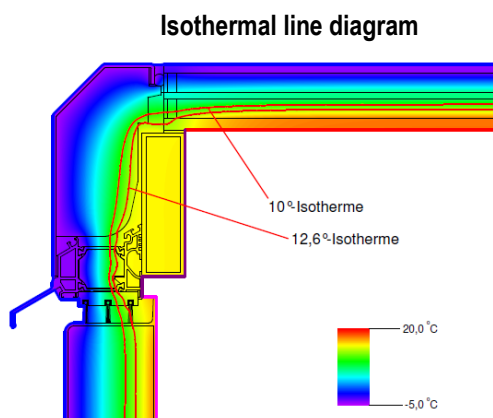
Special use as emergency exit with 24V variant.

The exit can also be used as an emergency exit. In this case the opening can be done by an emergency button (included in the scope of delivery), which may only be pressed in case of danger. In the case of emergency opening, the light barrier is out of order and the sash opens fully automated after the emergency button is pressed. A reset is only possible after a predefined procedure. The emergency button must not be used as a daily opening possibility.

Performance.

For full product performance specification available on request.

- CE marked quality according to EN 1873.
- Life Cycle Assessment (LCA) to EN 15804.
- Airtight to Class 4, EN 12207.
- Water tightness to Class 4 according to BS EN 12208.
- Wind Load to Class C4, EN 12210.
- CWCT Class 2 Non-fragile
- Thermally broken: 10° isothermal line remains within the structure (see diagram)



Delivery, packing and storage.

All deliveries, unless otherwise agreed in writing, are by road transport and subject to our standard delivery terms, which are available within the document: 'Company overview and standard delivery and installation terms.' Off-loading is the responsibility of the buyer. A crane will be required (provided by customer) to lift the unit onto the roof. Details of packing and safe storage are also included in this document.

Interface and fitting.

Installation service, available on request. Subject to our standard installation terms, which are available within the document: 'Company overview and standard delivery and installation terms.' Installation guide available, please contact LAMILUX UK. Flat roofing membrane or roof covering to be sealed up the upstand by others to complete the weathertight assembly. Please call to discuss contract/site specific install requirements.