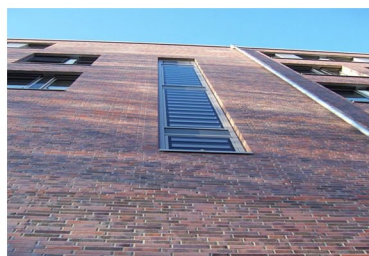




Information about louvre window TGL ISO 24 BT 50 / 32 BT 60/60UM



TGL ISO 24 BT50 / 32 BT60 / 44 BT70

The TGL ISO is the thermally separated version of the NTL. Window and slat frames are made of thermally separated aluminium profiles with a frame construction depth of 50, 60 or 70 mm. The TGL ISO is approved as a natural smoke and heat extracting system according to DIN EN 12101-2:2003.

Louvre blades:

Choice of panel or insulating glazing up to 3-fold insulating glazing.

Total thickness of slats: BT50 - 24 mm, BT60 - 32 mm, BT70 - 44 mm.

BT50 variable slat height: 120 – 400 mm

BT60 / BT70 variable slat height: 200 – 400 mm

Sealings:

Lateral with sealing brushes, horizontal profile joints with sealing brushes and EPDM gasket.

Technical specification tested as per DIN EN 12101-2:2003:

- BT50 - Aerodynamic: $C_v = 0,56 - 0,61$ (opening angle 78°)*
- BT60 - Aerodynamic: $C_v = 0,50 - 0,56$ (opening angle 64°)*
- Structural stability under wind load WL 3000
- Function at low temperatures: T-20*

Technical specification tested as per DIN EN 14351-1:2006+A1:2010:

- Driving rain tightness according to DIN EN 12207:
 - BT50 - classification 6A
 - BT60 - classification 7A with additional sealing
- Joint permeability according to DIN EN 12208:
 - BT50 - classification 3
 - BT60 - classification 4 with additional sealing
- Wind resistance according to DIN EN 12210:
 - BT50 - classification C2
 - BT60 - classification C5 with additional sealing

Further technical specification:

- Airborne sound insulation according to DIN EN ISO 717-1:
 - BT50 - 38 dB*
 - BT60 - 39 dB*
 - Burglar resistance according to DIN EN 1627: BT60 - RC2 / BT70 - RC3
 - Ball impact resistance according to DIN 18032-3: existing for the BT60
 - Pendulum impact test with 900 Joule (fall proof)
- * subject to model and size. Technical values for TGL ISO 44 BT70 on request.

Possible sizes:

Minimum frame width = 300 mm

Maximum frame width = 2000 mm (broader elements are available divided by glazing bars)

Maximum frame width can be extended to 2500 mm with tandem control or double-acting drive.

[Link to TGL ISO 24 BT50 cross section](#)

[Link to TGL ISO 32 BT60 cross section](#)

